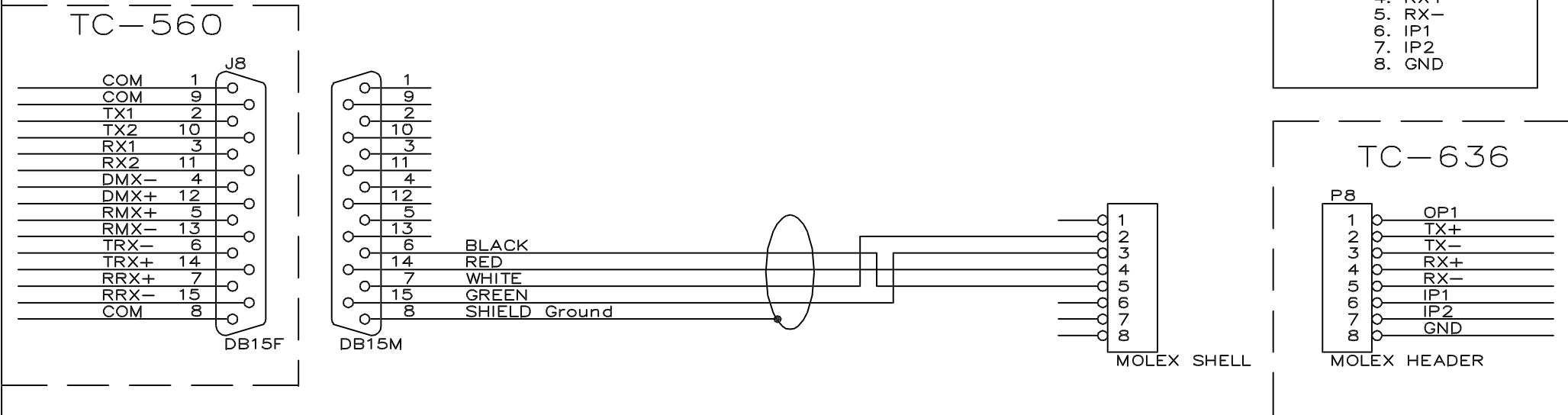
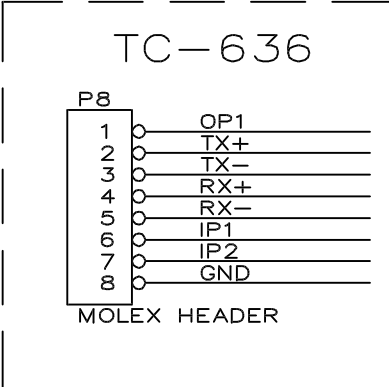


# TC-560F TRX DATA TO STU CARD FRAME

TC-560F TRX DATA DB15F TO STU TC-636 BACKPLANE 8 PIN MOLEX P8  
(REQUIRES A DB15M TO 8 PIN MOLEX SHELL ON CABLE)



- TC-636 DATA
1. OP1
  2. TX+
  3. TX-
  4. RX+
  5. RX-
  6. IP1
  7. IP2
  8. GND



PIN	SIGNAL
1.	GND COM
2.	TX1
3.	RX1
4.	DMX-
5.	RMX+
6.	TRX-
7.	RRX+
8.	GND COM
9.	GND COM
10.	TX2
11.	RX2
12.	DMX+
13.	RMX-
14.	TRX+
15.	RRX-

TC-560F DB15F		CABLE WIRE	TC-636 MOLEX HEADER	
PIN	SIGNAL	COLOR	PIN	SIGNAL
6.	TRX-	BLACK	5.	RX-
7.	RRX+	WHITE	2.	TX+
8.	SHIELD	SHIELD		
14.	TRX+	RED	4.	RX+
15.	RRX-	GREEN	3.	TX-

(BELDEN COLOR CODE USING 8723)

CABLE APPLICATION:  
THIS CABLE IS USED TO SEND TRX DATA FROM  
A TC-560 TO A STU CARD FRAME.

TRIAD PRODUCTIONS, INC.		
Title TC-560F TO STU DATA CABLE ASSEMBLY		
Size A	Document Number 560TOSTU.OC	REV A
Date:	May 15, 1995	Sheet 1 of 1